

May 2008

# WILLIS HURRICANE TRACKING AND ADVISORY SERVICE

The Willis Hurricane Tracking and Advisory Service offers real-time direct notification of the status and forecast track of developing tropical depressions, tropical storms and hurricanes in the Atlantic basin. Actual public advisories are sent to clients at least a twice a day during tropical cyclone development stages. This proactive service is available at no charge to provide our clients and other interested parties with advanced warning so they can commence preparations to protect their property in the event of an approaching storm.

## SAMPLE BULLETIN

000  
WTNT33 KNHC 111436  
TCPAT3  
BULLETIN  
HURRICANE ISABEL ADVISORY NUMBER 22  
NWS TPC/NATIONAL HURRICANE CENTER MIAMI FL  
11 AM AST THU SEP 11 2003

...EXTREMELY DANGEROUS HURRICANE ISABEL CONTINUES MOVING WESTWARD...

AT 11 AM AST...1500Z...THE CENTER OF HURRICANE ISABEL WAS LOCATED NEAR LATITUDE 21.4 NORTH... LONGITUDE 54.5 WEST OR ABOUT 535 MILES...865 KM...EAST-NORTHEAST OF THE NORTHERN LEEWARD ISLANDS.

ISABEL IS MOVING TOWARD THE WEST NEAR 9 MPH...15 KM/HR...AND THIS MOTION IS EXPECTED TO CONTINUE FOR THE NEXT 24 HOURS.

MAXIMUM SUSTAINED WINDS HAVE INCREASED TO NEAR 150 MPH...240 KM/HR...WITH HIGHER GUSTS. FLUCTUATIONS IN STRENGTH ARE COMMON IN MAJOR HURRICANES AND THESE COULD OCCUR DURING THE NEXT 24 HOURS.

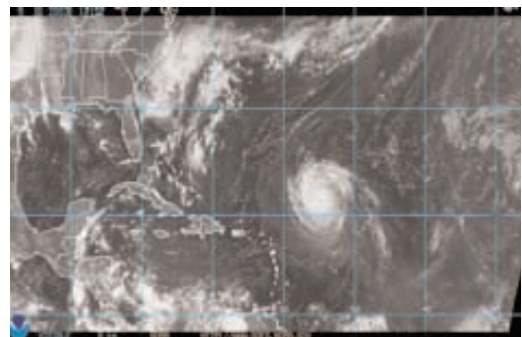
HURRICANE FORCE WINDS EXTEND OUTWARD UP TO 60 MILES... 95 KM... FROM THE CENTER...AND TROPICAL STORM FORCE WINDS EXTEND OUTWARD UP TO 185 MILES...295 KM.

ESTIMATED MINIMUM CENTRAL PRESSURE IS 930 MB...27.46 INCHES.

LARGE OCEAN SWELLS AND DANGEROUS SURF CONDITIONS ARE LIKELY OVER PORTIONS OF THE LEEWARD ISLANDS...THE VIRGIN ISLANDS...AND PUERTO RICO OVER THE NEXT SEVERAL DAYS.

REPEATING THE 11 AM AST POSITION...21.4 N... 54.5 W. MOVEMENT TOWARD...WEST NEAR 9 MPH. MAXIMUM SUSTAINED WINDS...150 MPH. MINIMUM CENTRAL PRESSURE... 930 MB.

THE NEXT ADVISORY WILL BE ISSUED BY THE NATIONAL HURRICANE CENTER AT 5 PM AST.



If you are interested in the service, please contact your local Willis representative or Joe Stavish, North America Property Risk Control Practice Leader, at 800 862 1441, stavish\_jc@willis.com; or Dave Gluckman, Senior Vice President, Property Risk Control, at 800 862 1441 ext. 4635, david.gluckman@willis.com.